

Little River Wairewa Community Trust

► **SUBMISSION TO CHRISTCHURCH CITY COUNCIL**

► **A) Community Facility, B) Medical Facility, C) Freshwater decontamination/wastewater unit**

- This submission is the outcome of funding facilitated by The Akaroa Wairewa Community Board and provided by Christchurch City Council in 2014.
- Since 2014 The Little River Wairewa Community Trust has supported the activities and decisions of the Working Party.
- Three key items the community has expressed a clear desire for are:
 1. Improved amenities and infrastructure for The Village / Settlement Centre. Requests to modernise the wastewater disposal system were presented to the Banks Peninsula District Council in 1997 with a sequence of documents and papers through to 2009 with no result.
 2. A medical facility / outreach clinic
 3. A health and fitness centre.

Previous Development

Birdlings Flat Community Hall

Currently the Little River Wairewa Community Trust is overseeing the completion of The Birdlings Flat Community Hall (Te Whare Tapere o Te Mata Hapuku) on behalf of the Birdlings Flat Community and Christchurch City Council. First proposed in 2008 and carried forward by members of the community, CCC and the Trust. This build is near completion with an opening date set for 23 June 2017.

Development Process for Birdlings Flat Community Centre



Designation of site for
Birdlings Flat Community Centre



Foundation completion on site



The first three stages of this building are shown here when the site was occupied in early September after the formal Blessing. The building is in a superb setting.

Main frame erected on site

Completion of the Birdlings Flat Community Centre

Elevated Timber
Platform access



Currently the access to the deck is being completed and the second image shows the front elevation as at 17 May 2017.





The outcome of the working party was this document. Little River Big Ideas “A Community Plan for Little River and Cooptown” from which the idea for a combined Community facility incorporating Gymnasium, Dojo, Consulting rooms and associated storage was proposed.

LITTLE RIVER BIG IDEAS

Little River: Big Ideas is:

Our plan.

Throughout this plan, the term ‘WE’ is used, reflecting that this is our plan for our community. ‘WE’ includes volunteers, local clubs and organisations, the Little River Wairewa Community Trust and everyone else who is prepared to give their time to make things happen. If we don’t then our BIG IDEAS will remain just that.

For projects that involve agencies based outside the community, ‘WE’ includes our Community Board Members, Councillors and other community leaders who will need to use their influence to help pursue the BIG IDEAS to others on our behalf.

A ‘living’ document.

Our Plan has the flexibility to incorporate new issues and ideas as required. New ideas and other opportunities will emerge which we can, year on year, add to our plan.

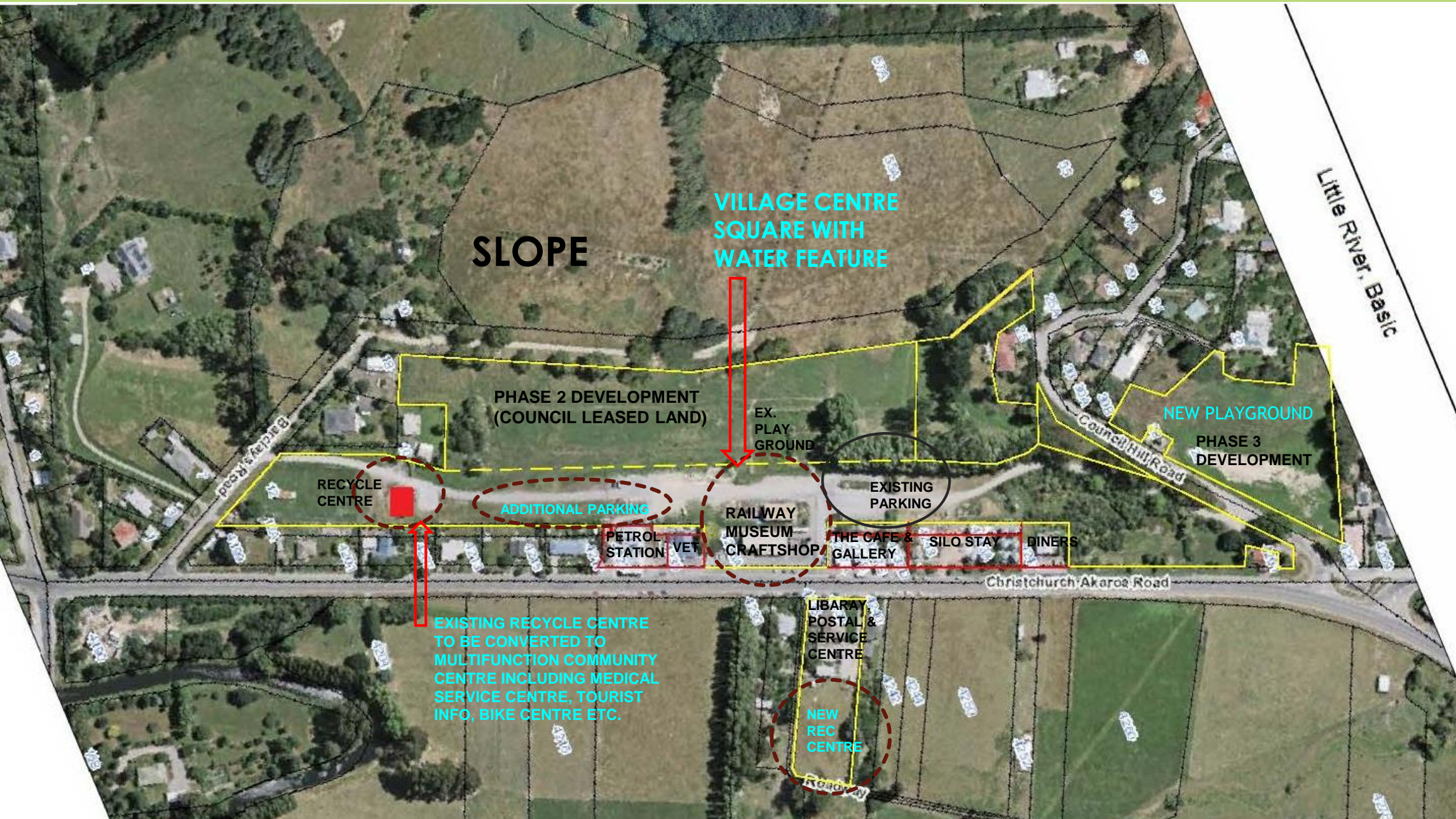
Plan of Future Development

▶ Little River Village Centre Plan – Big Ideas

- ▶ At a recent small public meeting in the Okuti Hall a presentation was heard of the work done by the Lincoln Envirotown group and the following idea grew:
 - ▶ If such amenities have been long needed
 - ▶ And if the Settlement /Village Centre needs refreshing
 - ▶ Then why not incorporate such a proposition in the upgrading of that area.
- ▶ To do this we needed to ensure that it was on the agenda for CCC Annual Plan.



Shows an aerial view of the Settlement area with appropriate council land delineated in yellow mostly on the West side of SH75. The greyish area is the current car parking and generally unused space which would be phase 1. A suggestion for utilisation of that area follows.



PHASE 1 DEVELOPMENT OF LITTLE RIVER CENTRE

Highlights concepts for the possible disposition of facilities.



SH75 and the unused space behind the settlement. Not a good look for visitors who park their cars there or for pedestrians or cyclists



Existing vehicle ingress, egress and parking alongside Highway 75 - outside the Little River Craft Station



Existing view of vacant land at rear from Little River Rail Station to the Recycling Centre



**VILLAGE CENTRAL SQUARE
WITH WATER FEATURES**



ADDITIONAL LANDSCAPED CAR PARKING

**EXISTING RECYCLING CENTRE TO BE
CONVERTED TO MULTI FUNCTION
COMMUNITY SERVICE CENTRE
INCLUDED MEDICAL SERVICES, BIKE
EVENTS, ART EXHIBITION , MUSICAL
MEETINGS ETC.**



**PANORAMIC VIEW OF THE PROPOSED LITTLE RIVER VILLAGE CENTRE PLAN
FROM NORTH SIDE TO SOUTH SIDE**

Possible disposition of some of the concepts for refreshing the area.



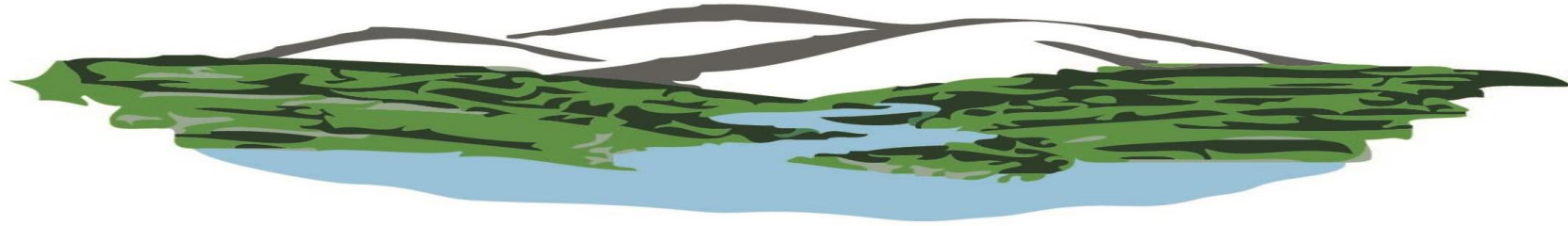
PROPOSED MEANS OF CONTROLLING VEHICLE'S SPEED OF 70MPH
APPROACHING LITTLE RIVER CENTRAL FROM CHRISTCHURCH

Land Transport and CCC have already listened to the community in regard to lowering the speed limit to 60km/hr. The community knows and CCC is now aware of their needs in respect of the Settlement /Village Centre enhancement.



IMAGE OF CARPARKING AND CENTRAL SQUARE WITH WATER FEATURE – POOLS OR FOUNTAIN

Some clear ideas that could be utilised to enhance the otherwise mundane look of the settlement which have been used elsewhere.



Little River Wairewa Community Trust

Our request:

That consideration be given for the inclusion of a combined Community Health facility and Wastewater / Water Decontamination Unit in the Christchurch City Council's Annual Plan for Little River.

Thank you.